



[Serialnumberforembrilliancethumbnailer](#)

Welcome to the Embrilliance Thumbnailer for Windows!

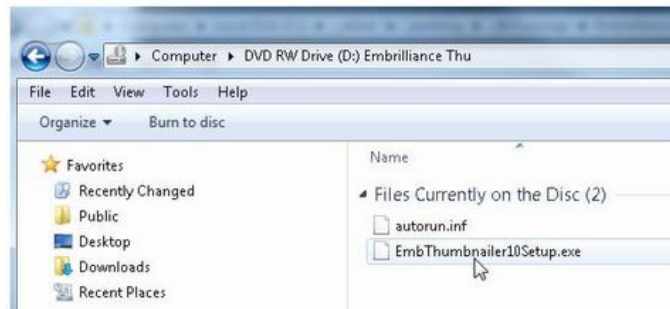
When installed, the Embrilliance Thumbnailer will display embroidery designs in folders that you browse in Windows Explorer (a.k.a. "My Computer" or "Computer"). The great part of this is that there is no separate program to run when you want to see your files - just open a folder and have a look. This even works while you are downloading designs, saving you time from re-saving and re-naming files!

The Thumbnailer has to be installed. Then you can run the Control Panel which is used to turn on the thumbnails in Windows.

Note: Once you run the control program successfully, there is no other program - nothing to click on - just view your embroidery designs in a regular 'My Computer' window. Many customers ask us what else there is to do. The answer is, "Nothing. It's just that simple."

Auto-Running Installations

On most Windows XP systems, the CD will automatically run itself. This has changed in Windows Vista and Windows 7 for security reasons, according to Microsoft. So if you put in the CD and it does not run, simply open Explorer (My Computer) to the CD and double-click the file with the name that has the word, "Setup" in it.



Your installation will proceed like this:



[Serialnumberforembrilliancethumbnailer](#)



DOWNLOAD

d9dee69ac8